

# Cellvizio<sup>®</sup>

probe-based  
Confocal  
Laser  
Endomicroscopy



Mauna Kea Technologies

# Bringing Microscopy to the Patient

## Real time microscopic information <sup>(6)</sup>

- immediate decision-making <sup>(6)</sup>
- diagnosis and therapy all in one procedure <sup>(6)</sup>

## Superior sensitivity

- improved accuracy in malignant lesion detection <sup>(1, 2, 3, 4)</sup>
- better treatment option for patients <sup>(6)</sup>

## Reduced number of physical biopsies <sup>(4, 5)</sup>

- efficient screening and surveillance
- a less invasive procedure for patients

## Improved margin visualization

- more efficient treatments <sup>(6)</sup>

# At the Forefront of Cancer Detection

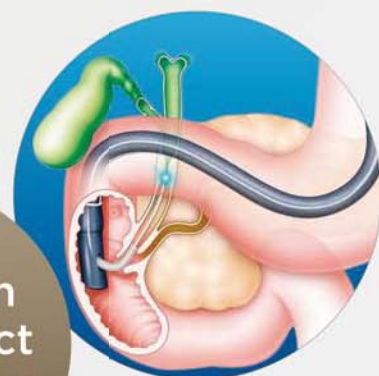
## Biliary Stricture

Cancer Detection Sensitivity <sup>(1, 2, 3)</sup>



Detection of bile duct malignancy

Only confocal system attaining biliary tree

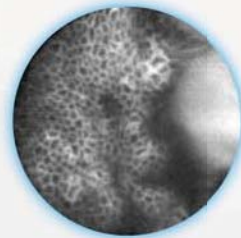


## Did you know?



## Confocal Miniprobes

- unique “through-the-scope” solution
- compatible with almost all endoscopes
- provides access to the entire GI tract, including biliary and pancreatic ducts (7)
- flexible and easy to use miniprobes for each indication
- deliver real time cellular video imaging



## Barrett's Esophagus

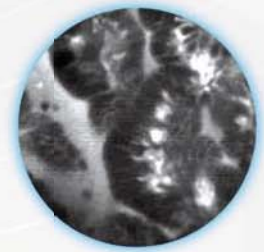
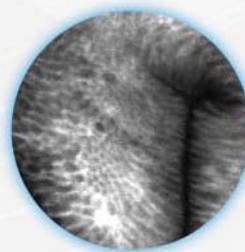
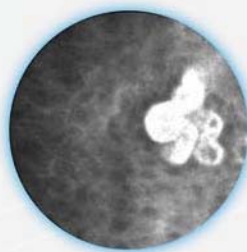
Characterizing Barrett's Mucosa in Real Time (4, 5, 6)

Squamous  
Esophagus

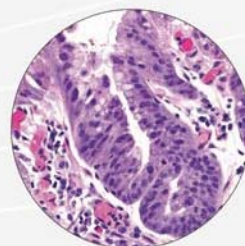
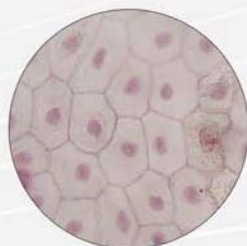
Intestinal  
Metaplasia

High Grade  
Dysplasia

CELLVIZIO®  
real time  
information



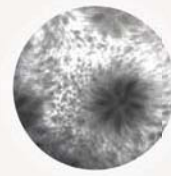
Histology  
delayed  
information





## Articulating Screen

- high quality video imaging (12 fps)
- intuitive user interface



## Confocal Miniprobe

- compatible with almost all endoscopes
- up to 20 procedures with one probe



## Laser Scanning Unit (LSU)

- illuminates tissue and records images
- state of the art video rate confocal microscope

## Confocal Processor

- controls the LSU
- generates real-time video imaging

## REFERENCES

1. Meining et al, CGH 2008
2. Chen et al, oral presentation at DDW 2010
3. Giovannini et al, Cancero Digest 2010
4. Sharma et al, oral presentation at DDW 2010
5. Pohl et al, GUT 2009
6. Konda et al, Diseases of the Esophagus 2010
7. Meining et al, GIE 2009



Mauna Kea Technologies

[www.maunakeatech.com](http://www.maunakeatech.com)

**EUROPE**  
Mauna Kea Technologies SAS  
9 rue d'Enghien,  
75010 Paris, France  
Ph: + 33 1 48 24 03 45  
Fax: + 33 1 48 24 12 18  
[cellvizio@maunakeatech.com](mailto:cellvizio@maunakeatech.com)

